

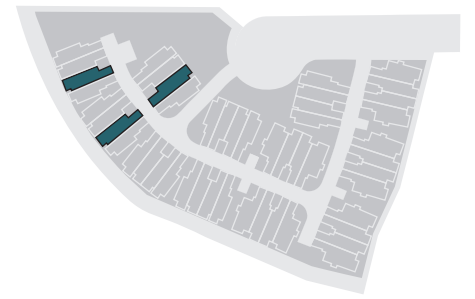
# ELM 2

3 Bedroom | 2.5 Bath

1,460 ft<sup>2</sup> Finished  
590 ft<sup>2</sup> Unfinished

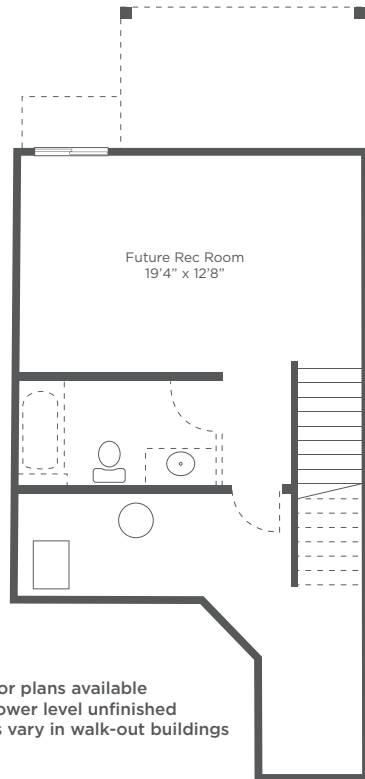
283 ft<sup>2</sup> Garage

2,050 ft<sup>2</sup> Total



## Lower Floor

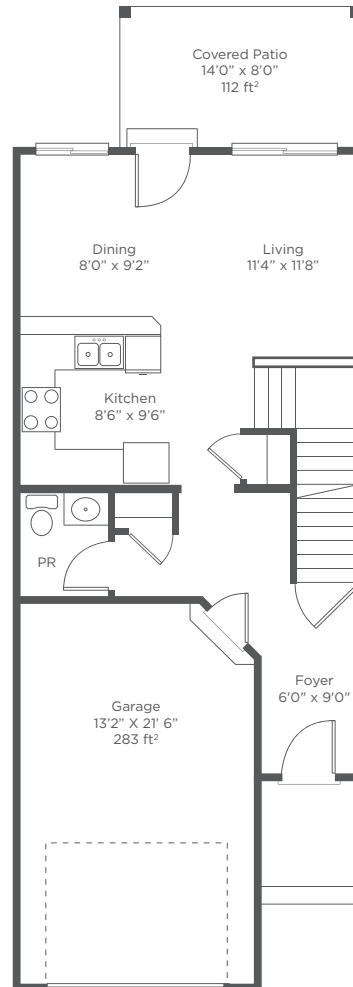
590 ft<sup>2</sup>  
Unfinished



- \* Mirrored floor plans available
- \* Basement/lower level unfinished
- \* Lower levels vary in walk-out buildings 10 and 12

## Main Floor

590 ft<sup>2</sup>



## Upper Floor

870 ft<sup>2</sup>



**THE DISTRICT**  
TOWNHOMES