

MAPLE

3 Bedroom | 2.5 Bath

1,302 ft² Finished
564 ft² Unfinished

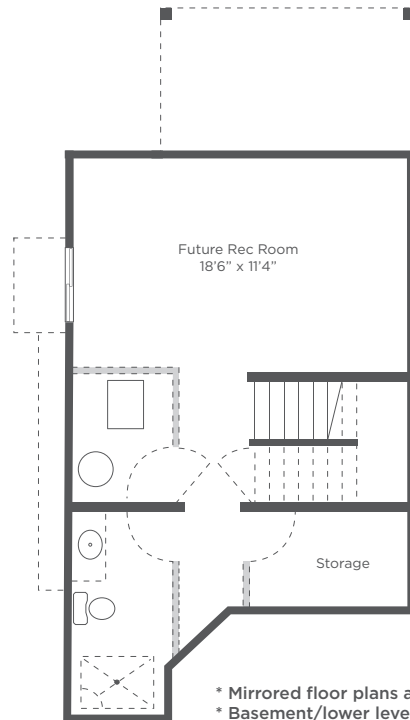
283 ft² Garage

1,866 ft² Total



Lower Floor

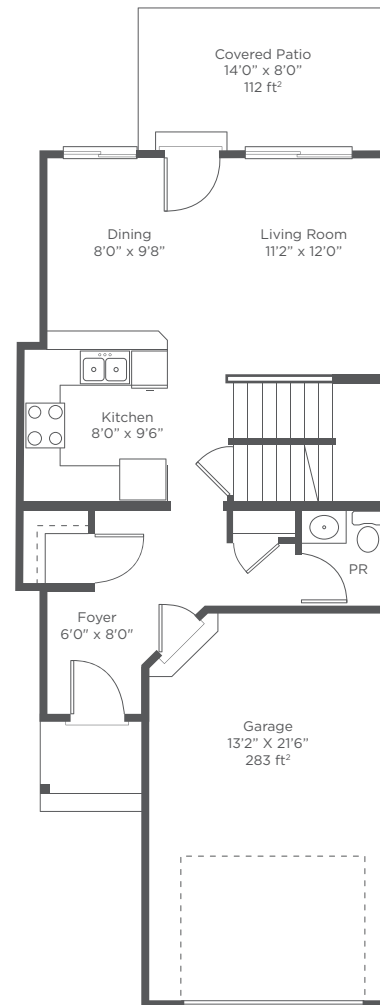
564 ft²
Unfinished



- * Mirrored floor plans available
- * Basement/lower level unfinished
- * Lower levels vary in walk-out buildings 10 and 12

Main Floor

582 ft²



Upper Floor

720 ft²

